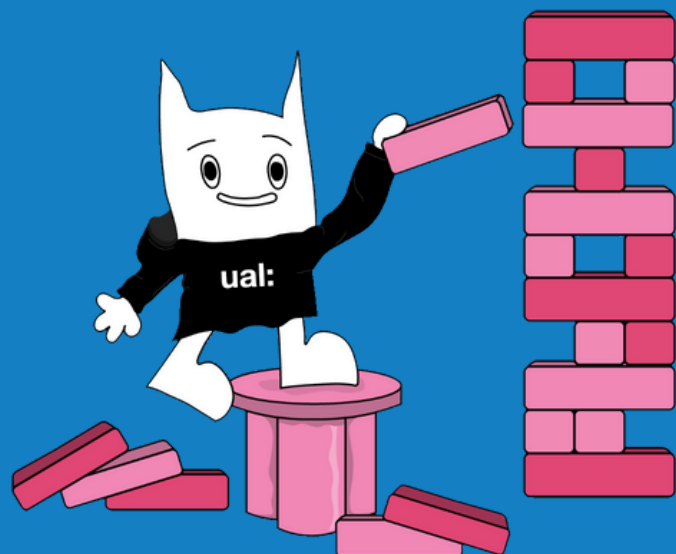


**SPORT CLUB AND SOCIETY**

# **COMMITTEE ELECTIONS**

**How To Vote GUIDE**



# Why Should I Vote For My Committee Elections?

Your members have put themselves forward for the positions offered by your club/society, and it is important that you vote on the candidates you think will do the best job in building and developing your club/society.

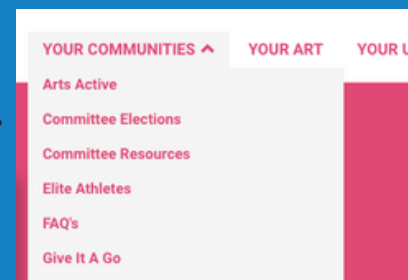
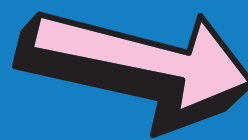
## Step by Step Guide:

You can vote for a candidate via the SU Website which you can find [here](#). Then follow these easy steps:

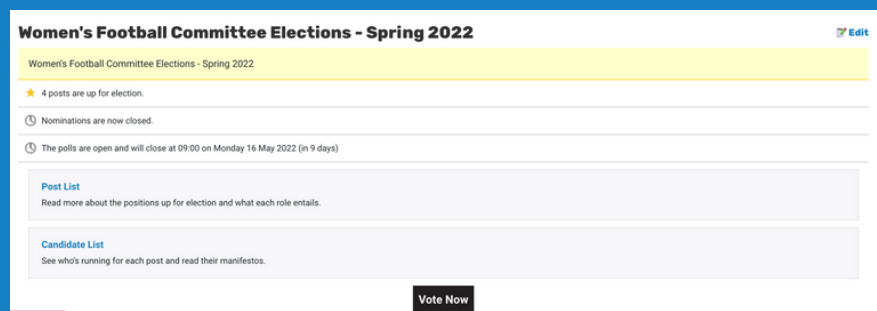
- Click the '[Your Communities](#)' tab on the tool bar at the top of the page.



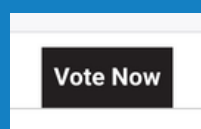
- On the drop down menu click '[Committee Elections](#)'



- Scroll down until you find your club/society



- Click on '[Vote Now](#)'





# Step by Step Guide:

- Here you can find the different positions and candidates. Vote for all of the positions offered by your club/society.

**You may vote for the following positions:**


- Social Secretary
- Captain
- President
- Treasurer

**Candidates for President**

 Cecilie Christensen	 Re-open Nominations (R.O.N.) <a href="#">About</a>
--	--

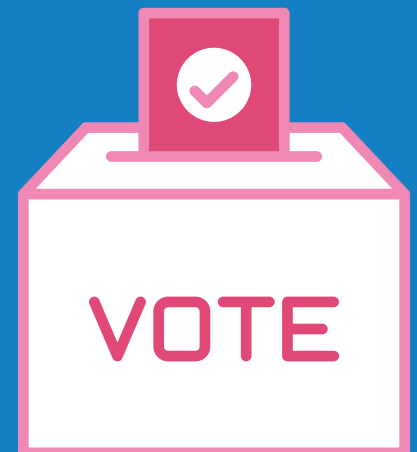
You can then click on the candidates to rank them in the order of your preference. If at any stage you believe the candidates you have not yet numbered are unsuitable for the position, number Re-Open Nominations (R.O.N.).

**Your vote for President**  
(1 position available)



- 1 Cecilie Christensen
- 2 Re-open Nominations (R.O.N.)

[Cast Vote](#)



And that's it!

Now all there's left to do is to wait for the results that will be announced after the elections end on May 16th.

